



A Community Arts Organization
P.O. Box 602 Shrewsbury, MA 01545
www.ArtistGuildShrewsbury.com

November 2014



Our next Meeting

6:45 November 3rd

Our guest this evening is *Laureen Hylka*, an award-winning, New England plein air painter. She works mainly in oil and soft pastels. Don't miss the many tips she has to offer and wonderful presentation of her works.

Also this evening, our *Japanese Art Exchange* paintings are due! Please remember to bring your background, your finished artwork and your \$5 fee, if you haven't already. It'll be great fun to see what each of you has come up with!



The Exhibit Committee is always seeking new ideas and new themes for our shows at the Credit Union. Send suggestions to nancyandjoe54@gmail.com.

Member News

Pam Haynes was accepted into the Rhode Island Watercolor Northeast Regional Watermedia Competition. Take in the last of the Fall color and some bright artworks at the same time! The show runs from **Oct.25-Nov.20 at Slater Memorial Park, Pawtucket, RI**

Holiday Colors

Is the theme for the new show at Shrewsbury Credit Union!

November 18th is the changeover. Please pick up and drop off your artworks between **4-5pm**.

PREREGISTER your entry info to Nancy at 508-887-6891 or nancyandjoe54@gmail.com. This simple step just tells us you are coming & what you are bringing so that we can make labels. Then, use, print and bring the REGISTRATION FORM (attached here or on our website) along with your artwork. Easy Breezy!

About Drop off:

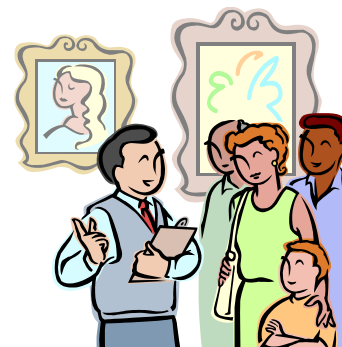
Starting in November, we will be using the first floor Conference Room at the Credit Union. It is easy to forget that we are in a bank when our minds are focused on the exhibit but we were a bit disruptive to bank business last time. We cannot congregate and chat in the bank lobby and near the artwork. We ask that you bring your work directly to the Conference Room, check out any work you are taking home and exit quietly. Please do not stay to peak at the new works coming in. Instead plan a trip to the Credit Union a few days later to enjoy the new show! Thank you for your cooperation.



Happy Birthday

To our own money guru, Chris Anderson and to new member Marion Buricatu. The *other* famous November-born artists are:

Auguste Rodin, Claude Monet, Georgia O'Keefe, Rene Magritte, Toulouse Lautrec & William Hogarth



Salon Night

Pam Pollan will open her home to us on **Nov. 9th from 7-9 pm**. Come on out for some Artsy Conversation! Bring a dessert or fruit to share if you wish. 118 Ridge Rd., Northboro. Look for the balloons. Please sign up at Monday's meeting.

Your Steering Committee

Chairman: Bob Wilson
Membership & Treasury: Chris Anderson
Programs Chair: Ralph Parente
Website & Publicity: Joseph Rice
Newsletter: Melissa Maglio
Secretary: Jenn Falcon
Member at Large: Lee Smith
Exhibits: Nancy Allen & Cindy Staub with Pauline Bergassi, Kay Vuona, Melissa Maglio & Bob Wilson